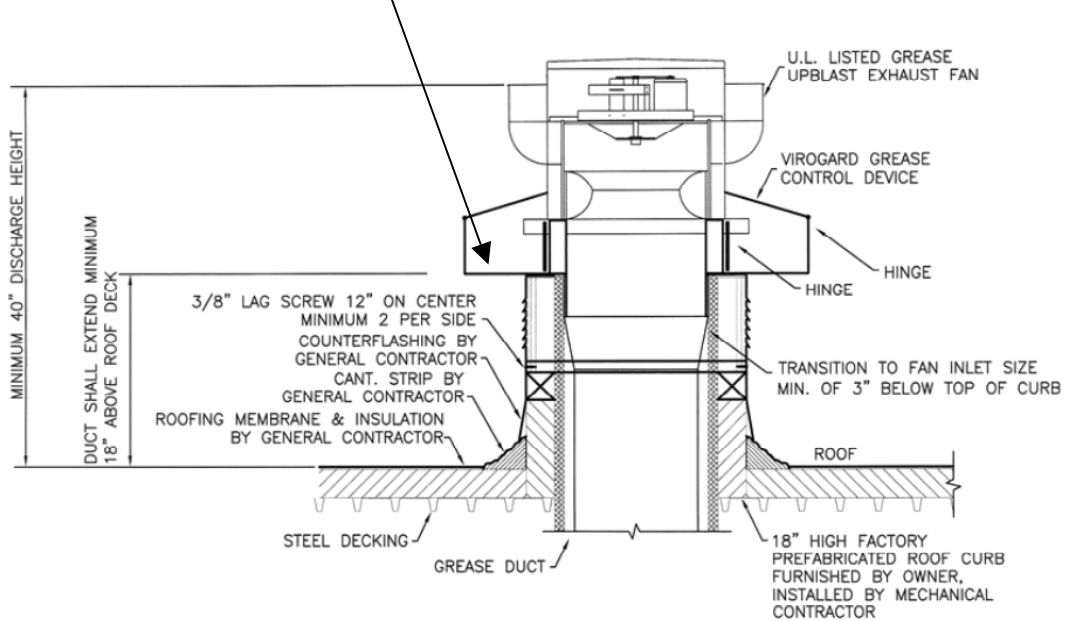


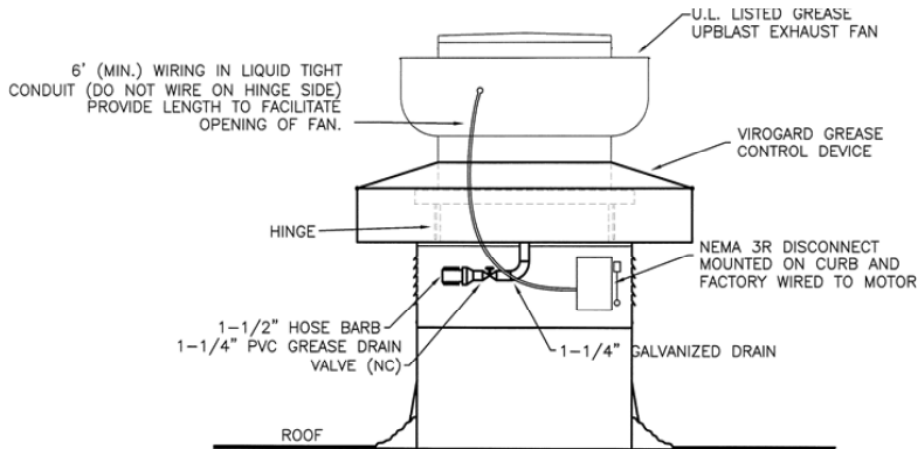
Viroguard basin surrounds fan base on all 4 sides. The basin is 10" wide, 6" deep on outside, 8" deep on inside. Need 17.5" clearance from curb on all 4 sides for rain guards (Flaps) to open fully. The 4 Rain guards are hinged on outside of Viroguard unit. Custom units required for smaller clearances.



NOTE:

1. INSTALLATION SHALL BE IN ACCORDANCE WITH NFPA 96 REQUIREMENTS.
2. THE INSIDE DIMENSION OF THE GREASE DUCT AT THE CURB TERMINATION CAN RANGE IN SIZE FROM THE INLET SIZE OF THE FAN (NORMALLY 18" SQUARE) TO 1/4" LARGER THAN THE INLET.
3. HINGE FAN TOWARD DRAIN SIDE.

3 GREASE EXHAUST FAN DETAIL
M300 NOT TO SCALE



NOTE:

1. INSTALLATION SHALL BE IN ACCORDANCE WITH NFPA 96 REQUIREMENTS.

4 GREASE EXHAUST FAN POWER DETAIL
M300 NOT TO SCALE