



# Alphabetical Index

DESCRIPTION	PAGE	DESCRIPTION	PAGE
<b>A</b>		<b>H</b>	
ACCESS DOORS		HANDLES, FILTER	
CURVED U.L. FIRE RATED	D16, D17	LOCKING	D1 - D5
FLAT U.L. FIRE RATED	D13 - D15	HINGES, FAN	D12
HI-TEMP ACCESS DOORS	D11		
FAN BLADE ACCESS PANEL	D12	<b>L</b>	
MAKE-UP AIR ACCESS PANEL	D12	LIGHTING FIXTURES	
		INCANDESCENT	D9
		LED	D8
<b>C</b>		<b>Q</b>	
CAULKING GUN	D5	QUICK-TITE®	
<b>F</b>		FITTINGS	D6, D7
FILTERS		HOLE PLUGS	D7
TYPE I - SPARK ARRESTOR	D2		
TYPE I - McDONALDS	D2	<b>R</b>	
TYPE II - HEAVY DUTY STAINLESS STEEL	D3	REPLACEMENT PARTS	D11
TYPE III - STAINLESS STEEL	D3		
TYPE VI - STAINLESS STEEL	D4	<b>S</b>	
TYPE VI - ALUMINUM	D4	SEALANT, SILICONE	D5
TYPE VI - GALVANIZED	D5		
<b>G</b>		<b>T</b>	
GASKET REPAIR KIT	D10	TAPE, FOIL & DUCT	D10
GREASE CUPS	D10		
		<b>W</b>	
		WIRE GUARDS	D11



Products shown in this catalog may be listed and/or certified by one or more of the following regulatory agencies and will be designated by the following marks:



Grease filters play a critical role in the overall safety and effectiveness of a kitchen exhaust system. Filters should be carefully selected to provide the correct volume of air through the ventilator, which is determined by the size of hood, the cooking equipment under it and state or local code requirements. There are many manufacturers of grease filters but not all filters have UL Listing. For ultimate safety of the exhaust system and to minimize liability issues, be sure that the filters that you select are UL Listed. This ensures that they meet NFPA standards.

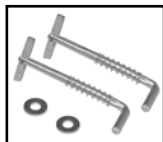
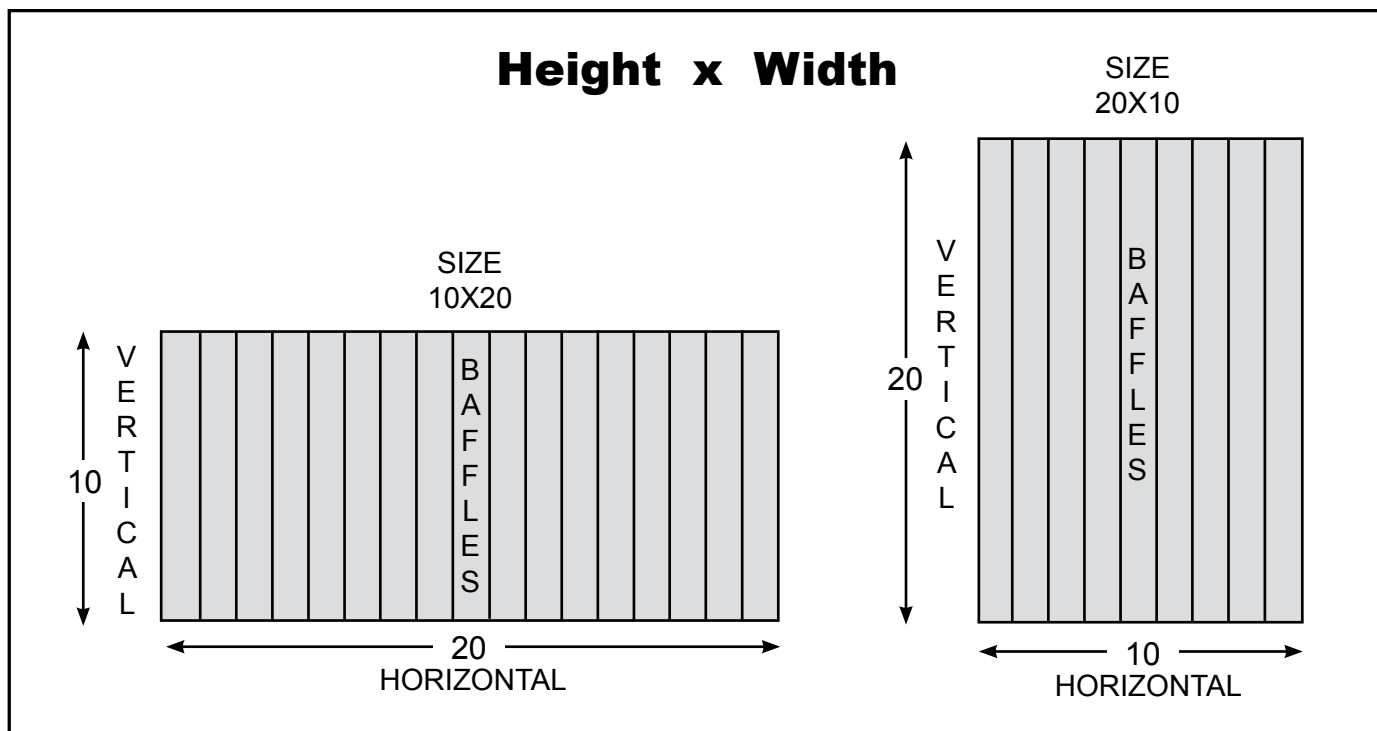
## ALL FLAME GARD GREASE FILTERS ARE UL AND NSF LISTED AND MEET NFPA 96 STANDARDS.

Working in concert with the surface fire suppression system, grease filters provide a strong defense against catastrophic duct system fires. Filters are designed to remove most of the grease from the airstream before it enters the ductwork. The grease runs off the baffles into a collection device where it can be easily removed. Selecting the proper number of the correct size filters is most important to ensure that the balance of the exhaust system will not be compromised and that all of the exhaust air passes through the filters before entering the ductwork.

### HOW TO ORDER FLAME GARD FILTERS

Filters **MUST** be installed with baffles running in the vertical (top to bottom) position so the grease will run down the baffles to the grease trough in the hood.

Standard sizes are ordered with the VERTICAL (top to bottom) dimension first, then the HORIZONTAL (left to right) dimension.

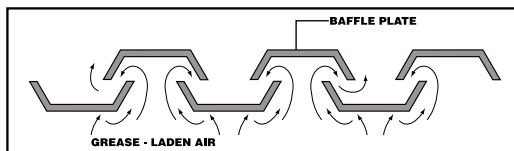
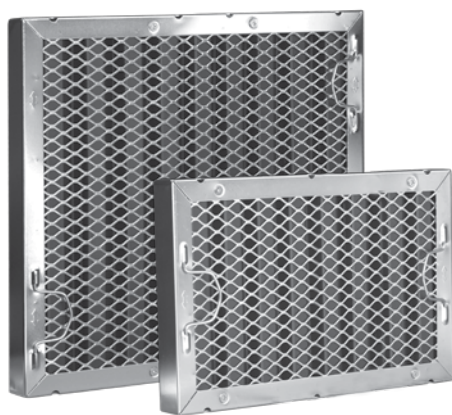


ALL FILTERS ARE AVAILABLE WITH SPECIAL LOCKING HANDLES. **ADD SUFFIX "-MH"** TO MODEL NUMBER.



FILTERS AVAILABLE WITH HOOK FOR USE IN CAPTIVE-AIRE STYLE HOODS. **ADD SUFFIX "-H"** TO MODEL NUMBER.

# TYPE I Filters



Type I's "U" shaped baffles with PTFE coating cause the grease to drain off the filter quickly. They resist flame penetration without disturbing the movement of the air. Type I filters have more baffles per square inch of filter, which means more grease impingement area and a high rate of grease extraction. The non-stick PTFE coating facilitates cleaning. Type I filters are easily cleaned in a pot sink or commercial dishwasher.

**Flame Gard Type I grease filters are the only filter with the exclusive Spark Arrestor screen to prevent airborne sparks and embers generated by solid fuel cooking from entering into the hood and duct system. Type I filters with Spark Arrestor meet criteria set by NFPA #96 for cooking with solid fuel.**

## TYPE I - FIXED BAFFLES SPARK ARRESTOR

MODEL NO.	NOMINAL SIZE - H X W	ACTUAL SIZE - H X W X D	WT. PER FILTER	CASE QTY	LIST PRICE PER FILTER*
151016	10" x 16" (254mm x 406mm)	9-1/2 x 15-1/2 x 1-3/4	7.4 lbs (3.36 kg)	6	\$150.00
151020	10" x 20" (254mm x 508mm)	9-1/2 x 19-1/2 x 1-3/4	9.1 lbs (4.13 kg)	6	\$150.00
151216	12" x 16" (305mm x 406mm)	11-1/2 x 15-1/2 x 1-3/4	8.4 lbs (3.81 kg)	6	\$150.00
151218	12" x 18" (305mm x 457mm)	11-1/2 x 17-1/2 x 1-3/4	9.3 lbs (4.22 kg)	6	\$155.00
151220	12" x 20" (305mm x 508mm)	11-1/2 x 19-1/2 x 1-3/4	10.1 lbs (4.58 kg)	6	\$165.00
151224	12" x 24" (305mm x 610mm)	11-1/2 x 23-1/2 x 1-3/4	12.75 lbs (5.78 kg)	3	\$175.00
151616	16" x 16" (406mm x 406mm)	15-1/2 x 15-1/2 x 1-3/4	10 lbs (4.54 kg)	3	\$155.00
151620	16" x 20" (406mm x 508mm)	15-1/2 x 19-1/2 x 1-3/4	12.65 lbs (5.74 kg)	3	\$160.00
151625	16" x 25" (406mm x 635mm)	15-1/2 x 24-1/2 x 1-3/4	16 lbs (7.26 kg)	3	\$165.00
152010	20" x 10" (508mm x 254mm)	19-1/2 x 9-1/2 x 1-3/4	9.4 lbs (4.26 kg)	6	\$150.00
152016	20" x 16" (508mm x 406mm)	19-1/2 x 15-1/2 x 1-3/4	12.65 lbs (5.74 kg)	3	\$160.00
152020	20" x 20" (508mm x 508mm)	19-1/2 x 19-1/2 x 1-3/4	15 lbs (6.8 kg)	3	\$165.00
152025	20" x 25" (508mm x 635mm)	19-1/2 x 24-1/2 x 1-3/4	17.9 lbs (8.12 kg)	3	\$175.00
152516	25" x 16" (635mm x 406mm)	24-1/2 x 15-1/2 x 1-3/4	14.55 lbs (6.6 kg)	3	\$165.00
152520	25" x 20" (635mm x 508mm)	24-1/2 x 19-1/2 x 1-3/4	18.2 lbs (8.26 kg)	3	\$175.00

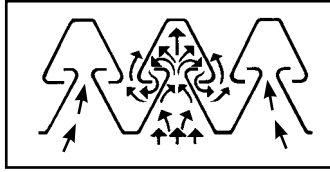
## TYPE I - STANDARD FIXED BAFFLES - McDONALDS

MODEL NO.	NOMINAL SIZE - H X W	ACTUAL SIZE - H X W X D	WT. PER FILTER	CASE QTY	LIST PRICE PER FILTER*
MCD 116	10 x 16 (254mm x 406mm)	9-1/2 x 15-1/2 x 1-3/4	7.4 lbs (3.36 kg)	6	\$150.00
MCD 116-1.5	10 x 16 (254mm x 406mm)	9-1/2 x 15-1/2 x 1-1/2	7.2 lbs (3.27 kg)	6	\$130.00
MCD 120	10 x 20 (254mm x 508mm)	9-1/2 x 19-1/2 x 1-3/4	9.1 lbs (4.13 kg)	6	\$125.00
MCD 120-1.5	10 x 20 (254mm x 508mm)	9-1/2 x 19-1/2 x 1-1/2	8.9 lbs (4.04 kg)	6	\$130.00
MCD 123	12 x 24 (305mm x 607mm)	11-1/2 x 23-1/2 x 1-3/4	13 lbs (5.9 kg)	3	\$145.00
MCD 126	12 x 16 (305mm x 406mm)	11-1/2 x 15-1/2 x 1-3/4	8.4 lbs (3.81 kg)	6	\$125.00
MCD 128	12 x 18 (305mm x 457mm)	11-1/2 x 17-1/2 x 1-3/4	9.3 lbs (4.22 kg)	6	\$130.00
MCD 133	13-1/2 x 23-13/16 (343mm x 605mm)	13 x 23-1/2 x 1-3/4	13 lbs (5.9 kg)	3	\$155.00
MCD 136	13-1/2 x 16 (343mm x 406mm)	13 x 15-1/2 x 1-3/4	10 lbs (4.54 kg)	3	\$135.00
MCD 139	13-1/2 x 19-1/2 (343mm x 495mm)	13 x 19 x 1-3/4	12 lbs (5.44 kg)	3	\$150.00

Holes for handles and brackets installed with filter purchase. All filters are available with special locking handles. **Add suffix "-MH"** to model number. List price \$70.00 per filter. Filters available with hook for use in Captive-Aire style hoods. **Add suffix "-H"** to model number. List price \$35.00 per filter.

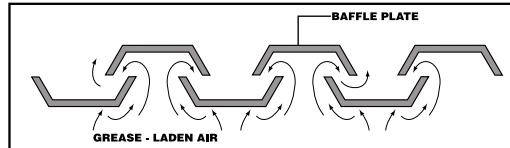
\*Filters sold in case quantities only. List prices are per filter sold in case quantity. For less than case quantity pricing, contact factory.





## TYPE II - STANDARD FIXED HEAVY DUTY STAINLESS STEEL BAFFLE

MODEL NO.	NOMINAL SIZE - H X W	ACTUAL SIZE - H X W X D	WT. PER FILTER	CASE QTY	LIST PRICE PER FILTER*
201016	10 x 16 (254mm x 406mm)	9-1/2 x 15-1/2 x 1-7/8	5.5 lbs (2.49 kg)	6	\$130.00
201020	10 x 20 (254mm x 508mm)	9-1/2 x 19-1/2 x 1-7/8	6 lbs (2.72 kg)	6	\$130.00
201216	12 x 16 (305mm x 406mm)	11-1/2 x 15-1/2 x 1-7/8	6.5 lbs (2.95 kg)	6	\$130.00
201220	12 x 20 (305mm x 508mm)	11-1/2 x 19-1/2 x 1-7/8	7 lbs (3.18 kg)	6	\$130.00
201616	16 x 16 (406mm x 406mm)	15-1/2 x 15-1/2 x 1-7/8	8 lbs (3.63 kg)	3	\$135.00
201620	16 x 20 (406mm x 508mm)	15-1/2 x 19-1/2 x 1-7/8	8.5 lbs (3.86 kg)	3	\$149.00
201625	16 x 25 (406mm x 635mm)	15-1/2 x 24-1/2 x 1-7/8	10.5 lbs (4.76 kg)	3	\$151.00
202016	20 x 16 (508mm x 406mm)	19-1/2 x 15-1/2 x 1-7/8	6.5 lbs (2.95 kg)	3	\$146.00
202020	20 x 20 (508mm x 508mm)	19-1/2 x 19-1/2 x 1-7/8	10.25 lbs (4.65 kg)	3	\$166.00
202025	20 x 25 (508mm x 635mm)	19-1/2 x 24-1/2 x 1-7/8	12 lbs (5.44 kg)	3	\$182.00
202516	25 x 16 (635mm x 406mm)	24-1/2 x 15-1/2 x 1-7/8	11.5 lbs (5.22 kg)	3	\$151.00
202520	25 x 20 (635mm x 508mm)	24-1/2 x 19-1/2 x 1-7/8	12 lbs (5.44 kg)	4	\$182.00



FULL FILTER HEIGHT BAFFLES AND "FRAMELESS" CONSTRUCTION MAXIMIZE THE AVAILABLE CAPTURE AREA WHILE INCREASING THE FILTER'S FREE AREA.



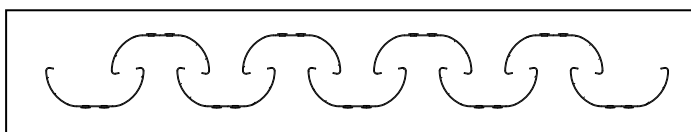
## TYPE III - STANDARD FIXED HEAVY DUTY STAINLESS STEEL BAFFLE

MODEL NO.	NOMINAL SIZE - H X W	ACTUAL SIZE - H X W X D	WT. PER FILTER	CASE QTY	LIST PRICE PER FILTER*
301016	10 x 16 (254mm x 406mm)	9-1/2 x 15-1/2 x 1-5/8	4.33 lbs (1.96 kg)	6	\$63.00
301020	10 x 20 (254mm x 508mm)	9-1/2 x 19-1/2 x 1-5/8	4.06 lbs (1.84 kg)	6	\$63.00
301216	12 x 16 (305mm x 406mm)	11-1/2 x 15-1/2 x 1-5/8	4 lbs (1.81 kg)	6	\$63.00
301220	12 x 20 (305mm x 508mm)	11-1/2 x 19-1/2 x 1-5/8	4.92 lbs (2.23 kg)	6	\$79.00
301616	16 x 16 (406mm x 406mm)	15-1/2 x 15-1/2 x 1-5/8	5.38 lbs (2.44 kg)	3	\$74.00
301620	16 x 20 (406mm x 508mm)	15-1/2 x 19-1/2 x 1-5/8	6.5 lbs (2.95 kg)	3	\$89.00
301625	16 x 25 (406mm x 635mm)	15-1/2 x 24-1/2 x 1-5/8	8 lbs (3.63 kg)	3	\$100.00
301818	18 x 18 (457mm x 457mm)	17-1/2 x 17-1/2 x 1-5/8	6.5 lbs (2.95 kg)	8	\$99.00
302016	20 x 16 (508mm x 406mm)	19-1/2 x 15-1/2 x 1-5/8	6.5 lbs (2.95 kg)	3	\$89.00
302020	20 x 20 (508mm x 508mm)	19-1/2 x 19-1/2 x 1-5/8	7.75 lbs (3.52 kg)	3	\$95.00
302025	20 x 25 (508mm x 635mm)	19-1/2 x 24-1/2 x 1-5/8	9.5 lbs (4.31 kg)	3	\$121.00
302516	25 x 16 (635mm x 406mm)	24-1/2 x 15-1/2 x 1-5/8	8 lbs (3.63 kg)	4	\$99.00
302520	25 x 20 (635mm x 508mm)	24-1/2 x 19-1/2 x 1-5/8	9.75 lbs (4.42 kg)	3	\$121.00

Holes for handles and brackets installed with filter purchase. All filters are available with special locking handles. **Add suffix "-MH"** to model number. List price \$70.00 per filter. Filters available with hook for use in Captive-Aire style hoods. **Add suffix "-H"** to model number. List price \$35.00 per filter.

\*Filters sold in case quantities only. List prices are per filter sold in case quantity. For less than case quantity pricing, contact factory.

# TYPE VI Filters



Our Type VI filters offer high performance at an economical price. The unique rounded baffle design maximizes grease impingement and facilitates cleaning.



## TYPE VI - STAINLESS STEEL BAFFLE GREASE FILTERS

MODEL NO.	NOMINAL SIZE - H X W	ACTUAL SIZE - H X W X D	WT. PER FILTER	CASE QTY	LIST PRICE PER FILTER*
FR51-1016	10" x 16" (254mm x 406mm)	9-5/8" x 15-3/4" x 1-3/4"	2.6 lbs (1.2 kg)	10	\$57.00
FR51-1020	10" x 20" (254mm x 508mm)	9-5/8" x 19-5/8" x 1-3/4"	3.2 lbs (1.5 kg)	10	\$58.00
FR51-1216	12" x 16" (305mm x 406mm)	11-5/8" x 15-3/4" x 1-3/4"	3.0 lbs (1.4 kg)	10	\$59.00
FR51-1220	12" x 20" (305mm x 508mm)	11-5/8" x 19-5/8" x 1-3/4"	3.6 lbs (1.7 kg)	10	\$69.00
FR51-1616	16" x 16" (406mm x 406mm)	15-3/4" x 15-3/4" x 1-3/4"	3.8 lbs (1.8 kg)	10	\$62.00
FR51-1620	16" x 20" (406mm x 508mm)	15-3/4" x 19-5/8" x 1-3/4"	4.5 lbs (2.1 kg)	10	\$69.00
FR51-1625	16" x 25" (406mm x 635mm)	15-3/4" x 24-5/8" x 1-3/4"	5.6 lbs (2.6 kg)	10	\$77.00
FR51-2016	20" x 16" (508mm x 406mm)	19-5/8" x 15-3/4" x 1-3/4"	4.6 lbs (2.1 kg)	10	\$69.00
FR51-2020	20" x 20" (508mm x 508mm)	19-5/8" x 19-5/8" x 1-3/4"	5.5 lbs (2.5 kg)	10	\$78.00
FR51-2025	20" x 25" (508mm x 635mm)	19-5/8" x 24-5/8" x 1-3/4"	6.7 lbs (3.1 kg)	10	\$94.00
FR51-2516	25" x 16" (635mm x 406mm)	24-5/8" x 15-3/4" x 1-3/4"	5.7 lbs (2.6 kg)	10	\$77.00
FR51-2520	25" x 20" (635mm x 508mm)	24-5/8" x 19-5/8" x 1-3/4"	6.8 lbs (3.1 kg)	10	\$94.00



## TYPE VI - ALUMINUM BAFFLE GREASE FILTERS

MODEL NO.	NOMINAL SIZE - H X W	ACTUAL SIZE - H X W X D	WT. PER FILTER	CASE QTY	LIST PRICE PER FILTER*
FA51-1016	10" x 16" (254mm x 406mm)	9-5/8" x 15-3/4" x 1-3/4"	1.0 lbs (0.5 kg)	10	\$29.00
FA51-1020	10" x 20" (254mm x 508mm)	9-5/8" x 19-5/8" x 1-3/4"	1.2 lbs (0.6 kg)	10	\$30.00
FA51-1216	12" x 16" (305mm x 406mm)	11-5/8" x 15-3/4" x 1-3/4"	1.1 lbs (0.6 kg)	10	\$30.00
FA51-1220	12" x 20" (305mm x 508mm)	11-5/8" x 19-5/8" x 1-3/4"	1.4 lbs (0.7 kg)	10	\$30.00
FA51-1616	16" x 16" (406mm x 406mm)	15-3/4" x 15-3/4" x 1-3/4"	1.4 lbs (0.7 kg)	10	\$34.00
FA51-1620	16" x 20" (406mm x 508mm)	15-3/4" x 19-5/8" x 1-3/4"	1.7 lbs (0.8 kg)	10	\$41.00
FA51-1625	16" x 25" (406mm x 635mm)	15-3/4" x 24-5/8" x 1-3/4"	2.1 lbs (1.0 kg)	10	\$42.00
FA51-2016	20" x 16" (508mm x 406mm)	19-5/8" x 15-3/4" x 1-3/4"	1.7 lbs (0.8 kg)	10	\$41.00
FA51-2020	20" x 20" (508mm x 508mm)	19-5/8" x 19-5/8" x 1-3/4"	2.1 lbs (1.0 kg)	10	\$48.00
FA51-2025	20" x 25" (508mm x 635mm)	19-5/8" x 24-5/8" x 1-3/4"	2.5 lbs (1.2 kg)	10	\$57.00
FA51-2520	25" x 20" (635mm x 508mm)	24-5/8" x 19-5/8" x 1-3/4"	2.5 lbs (1.2 kg)	10	\$57.00

Holes for handles and brackets installed with filter purchase. All filters are available with special locking handles. Add suffix "-MH" to model number. List price \$10.00 per filter. Mounting clips required for Captive Aire hoods - FR51-X015 (pair). Quantity 1 to 9 - \$5 NET EACH; quantity 10 or more - \$3 NET EACH.

\*Filters sold in case quantities only. List prices are per filter sold in case quantity. For less than case quantity pricing, contact factory.

# TYPE VI Filters & Silicone Sealant



File No. R10173  
NFA #96

## TYPE VI - GALVANIZED BAFFLE GREASE FILTERS

MODEL NO.	NOMINAL SIZE - H X W	ACTUAL SIZE - H X W X D	WT. PER FILTER	CASE QTY	LIST PRICE PER FILTER*
FG51-1016	10" x 16" (254mm x 406mm)	9-5/8" x 15-3/4" x 1-3/4"	2.6 lbs (1.2 kg)	10	\$28.00
FG51-1020	10" x 20" (254mm x 508mm)	9-5/8" x 19-5/8" x 1-3/4"	3.2 lbs (1.5 kg)	10	\$28.00
FG51-1216	12" x 16" (305mm x 406mm)	11-5/8" x 15-3/4" x 1-3/4"	3.0 lbs (1.4 kg)	10	\$28.00
FG51-1220	12" x 20" (305mm x 508mm)	11-5/8" x 19-5/8" x 1-3/4"	3.6 lbs (1.7 kg)	10	\$30.00
FG51-1616	16" x 16" (406mm x 406mm)	15-3/4" x 15-3/4" x 1-3/4"	3.8 lbs (1.8 kg)	10	\$33.00
FG51-1620	16" x 20" (406mm x 508mm)	15-3/4" x 19-5/8" x 1-3/4"	4.5 lbs (2.1 kg)	10	\$32.00
FG51-1625	16" x 25" (406mm x 635mm)	15-3/4" x 24-5/8" x 1-3/4"	5.6 lbs (2.6 kg)	10	\$38.00
FG51-2016	20" x 16" (508mm x 406mm)	19-5/8" x 15-3/4" x 1-3/4"	4.6 lbs (2.1 kg)	10	\$34.00
FG51-2020	20" x 20" (508mm x 508mm)	19-5/8" x 19-5/8" x 1-3/4"	5.5 lbs (2.5 kg)	10	\$40.00
FG51-2025	20" x 25" (508mm x 635mm)	19-5/8" x 24-5/8" x 1-3/4"	6.7 lbs (3.1 kg)	10	\$48.00
FG51-2516	25" x 16" (635mm x 406mm)	24-5/8" x 15-3/4" x 1-3/4"	5.7 lbs (2.6 kg)	10	\$43.00
FG51-2520	25" x 20" (635mm x 508mm)	24-5/8" x 19-5/8" x 1-3/4"	6.8 lbs (3.1 kg)	10	\$48.00

Holes for handles and brackets installed with filter purchase. All filters are available with special locking handles. **Add suffix "-MH"** to model number. List price \$10.00 per filter. Mounting clips required for Captive Aire hoods – FR51-X015 (pair). Quantity 1 to 9 - \$5 NET EACH; quantity 10 or more - \$3 NET EACH.

\*Filters sold in case quantities only. List prices are per filter sold in case quantity. For less than case quantity pricing, contact factory.



3oz Tube

## SILICONE SEALANT

- 10.3 oz (305ml)
- NSF LISTED • FDA APPROVED • U.L. RECOGNIZED
- AVAILABLE IN CLEAR, BRIGHT ALUMINUM, WHITE, BLACK AND RED (HI-TEMP)
- FITS ALL STANDARD CAULKING GUNS
- MEETS FDA EXTRACTION REQUIREMENT NO. 21 CFR177.2600
- FURNISHED WITH REMOVABLE TIP
- MEETS MIL -A- 46106A TYPE 1

MODEL NO.	COLOR	MAX. SERVICE	TUBE SIZE	CASE QTY	LIST PRICE EACH*
M90-1010	CLEAR	400°F (232°C)	10.3 oz (305 ml)	12	\$6.25
M90-1012	ALUMINUM	400°F (232°C)	10.3 oz (305 ml)	12	\$6.25
M90-1014	WHITE	400°F (232°C)	10.3 oz (305 ml)	12	\$6.25
M90-1016	BLACK	400°F (232°C)	10.3 oz (305 ml)	12	\$6.25
M90-1018	HI TEMP RED	500°F (315°C)	10.3 oz (305 ml)	12	\$10.50
M90-0310	CLEAR	400°F (232°C)	3 oz (85 ml)	20	\$4.25
M90-0312	ALUMINUM	400°F (232°C)	3 oz (85 ml)	20	\$4.00
M90-0314	WHITE	400°F (232°C)	3 oz (85 ml)	20	\$4.00
Q99-1000	CAULKING GUN FOR USE WITH 10.3oz CARTRIDGE				\$6.75

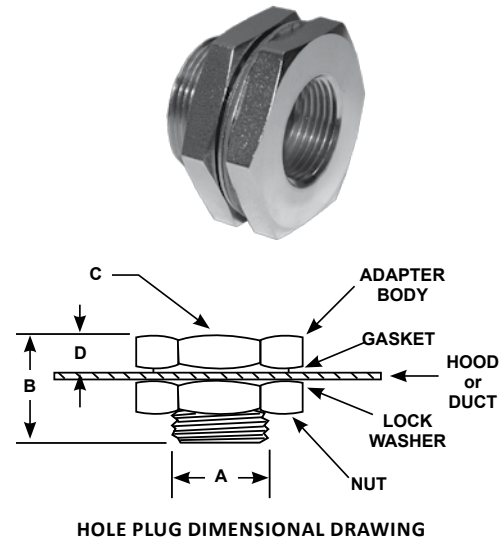
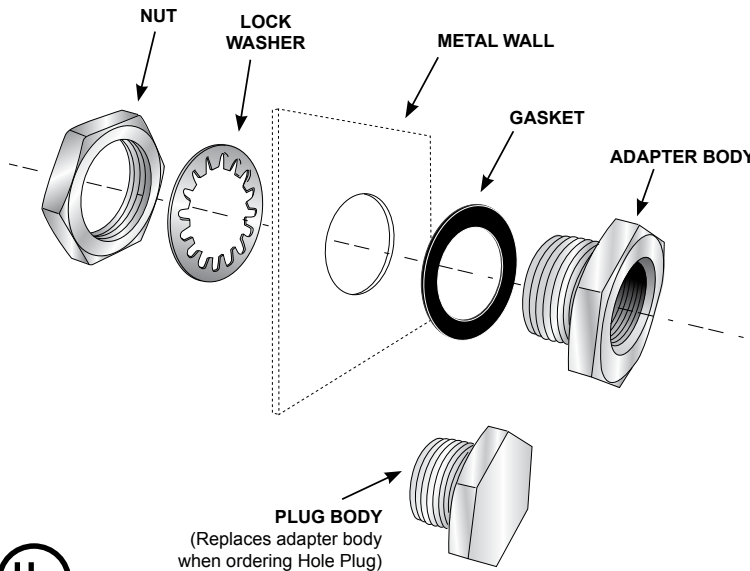
\*Silicone sold in case quantities only. List prices are per tube sold in case quantity. For less than case quantity pricing, contact factory.



File No. E224060



- USED AS THROUGH-PENETRATION FITTINGS IN COOKING HOOD SYSTEMS
- PROVIDES STRUCTURAL SUPPORT FOR THE SYSTEM PIPING, IMPROVING SYSTEM INTEGRITY AND REDUCING THE NEED FOR ADDITIONAL PIPE HANGERS
  - PRESSURE TESTED TO 5000 PSI
  - IN CONFORMANCE WITH THE REQUIREMENTS OF NFPA STANDARD NO. 96
- MANUFACTURED OF SOLID MACHINED STEEL FOR SUPERIOR STRENGTH AND HIGH TEMPERATURE RESISTANCE
  - ATTRACTIVE CHROME PLATED FINISH MAXIMIZES CORROSION RESISTANCE
- INTERNAL PIPE THREADS PERMIT EASY COUPLING OF THE PIPES AT THE POINT OF PENETRATION



File No. MH19744

## STANDARD FITTINGS

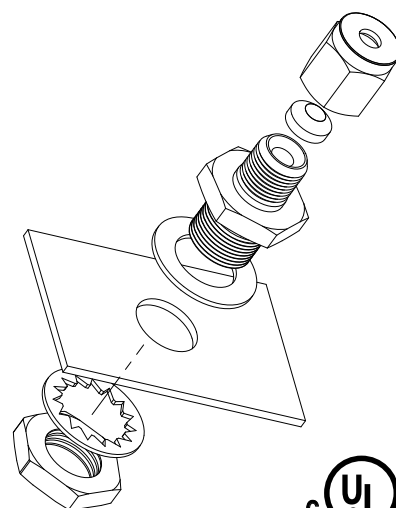
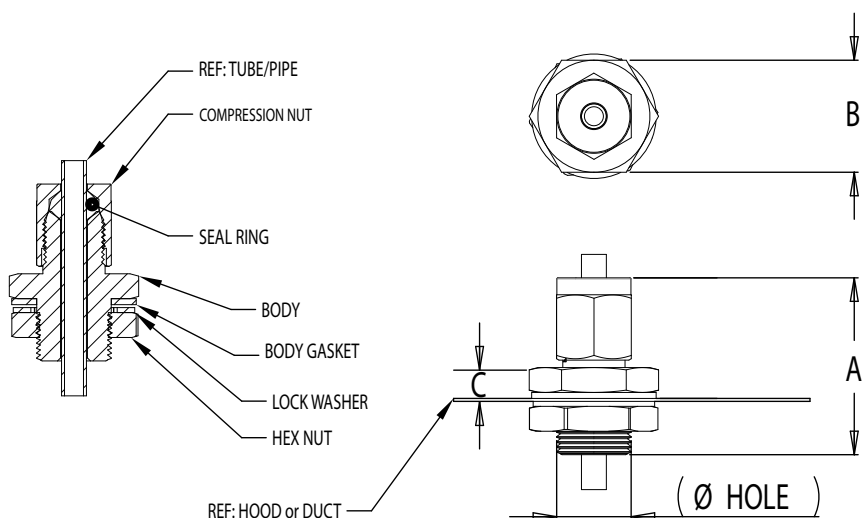
MODEL NO.	QUICK-TITE FITTING	HOLE CUT OUT SIZE (A)	WT. PER FITTING	B	C	D	CASE QTY	LIST PRICE PER FITTING*
F11-0014	1/4" NPSM Pipe	13/16" (21mm) to 7/8" (22mm)	.15 lb (.07 kg)	.88	1.125 HEX	.31	24	\$9.00
F11-0038	3/8" NPT Pipe	1-3/16" (31mm) to 1-5/16" (33mm)	.36 lb (.16 kg)	1.00	1.5 HEX	.37	24	\$9.00
F11-0038A	3/8" NPSM Pipe	15/16" (24mm) to 1" (25mm)	.21 lb (10 kg)	1.00	1.25 HEX	.37	24	\$8.00
F11-0012	1/2" NPT Pipe	1-3/16" (31mm) to 1-5/16" (33mm)	.35 lb (.16 kg)	1.14	1.5 HEX	.37	24	\$10.00
F11-0034	3/4" NPT Pipe	1-7/16" (37mm) to 1-9/16" (40mm)	.52 lb (24 kg)	1.26	1.88 HEX	.37	12	\$15.00
F11-0100	1" NPT Pipe	1-11/16" (43mm) to 1-7/8" (48mm)	.852 lb (39 kg)	1.5	2.25 HEX	.44	8	\$25.00
F11-0114	1-1/4" NPT Pipe	2-1/16" (53mm) to 2-1/2" (64mm)	.97 lb (.44 kg)	1.5	2.5 HEX	.44	8	\$25.00
F11-0112	1-1/2" NPT Pipe	2-5/8" (59mm) to 2-1/2" (64mm)	1.18 lbs (.54 kg)	1.5	2.75 HEX	.44	8	\$50.00

## CORNER PULLEYS

F11-0012A	7/8"-20 x 1/2" NPT	.97 lb (.44 kg)	1.14	1.5 HEX	.37	8	\$10.00
F11-0012B	15/16"-20 x 1/2" NPT	1.18 lbs (.54 kg)	1.14	1.5 HEX	.37	8	\$7.00

\*Quick-Tites sold in case quantities only. List prices are per fitting sold in case quantity. For less than case quantity pricing, contact factory.



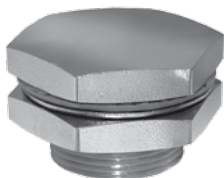


## COMPRESSION FITTINGS

MODEL NO.	QUICK-TITE FITTING	HOLE CUT OUT SIZE	WT. PER FITTING	A	B	C	CASE QTY	LIST PRICE PER FITTING*
F15-250T	1/4" (6mm) Tube	13/16" (21mm) to 7/8" (22mm)	.15 lb (.07 kg)	1.8	1.125 HEX	.31	24	\$15.00
F15-375T	3/8" (10mm) Tube	1-3/16" (31mm) to 1-5/16" (33mm)	.36 lb (.16 kg)	1.8	1.125 HEX	.31	24	\$15.00
F15-500T250P	1/2" (13mm) Tube & 1/4" (6mm) Pipe	15/16" (24mm) to 1" (25mm)	.21 lb (10 kg)	1.8	1.125 HEX	.31	24	\$16.00
F15-625T375P	5/8" (16mm) Tube & 3/8" (10mm) Pipe	1-3/16" (31mm) to 1-5/16" (33mm)	.35 lb (.16 kg)	2.0	1.5 HEX	.37	24	\$20.00
F15-500EMT	1/2" (13mm) EMT Conduit	1-7/16" (37mm) to 1-9/16" (40mm)	.52 lb (24 kg)	2.0	1.5 HEX	.37	12	\$20.00
F15-500P	1/2" (13mm) Pipe	1-11/16" (43mm) to 1-7/8" (48mm)	.852 lb (39 kg)	2.08	1.5 HEX	.37	8	\$22.00
F15-750P	3/4" (19mm) Pipe	2-1/16" (53mm) to 2-1/2" (64mm)	.97 lb (.44 kg)	2.37	1.875 HEX	.37	8	\$30.00
F15-1000P	1" (25mm) Pipe	2-5/8" (59mm) to 2-1/2" (64mm)	1.18 lbs (.54 kg)	2.5	2.25 HEX	.44	8	\$50.00

## QUICK-TITE® HOLE PLUGS

- QUICK-TITE HOLE PLUGS ARE DESIGNED TO PROVIDE A POSITIVE SEAL OR PATCH FOR EXISTING PENETRATIONS THAT ARE NO LONGER REQUIRED
- IDEAL TO REPAIR UNWANTED HOLES AS A RESULT OF CHANGES TO A FIRE PROTECTION SYSTEM, MOVING THE LOCATION OF A FIRE SUPPRESSION NOZZLE, DRILLING A HOLE AT THE WRONG LOCATION OR USING A HOOD/DUCT WITH PREVIOUSLY DRILLED HOLES
- QUICK-TITE HOLE PLUGS ARE EASY TO INSTALL AND PROVIDE AN ATTRACTIVE, FINISHED APPEARANCE TO MATCH FITTINGS
- AVAILABLE FOR FIVE STANDARD HOLE SIZES - 3/4", 7/8", 1-1/8", 1-3/8", AND 1-5/8"



MODEL NO.	HOLE SIZE	WT. PER HOLE PLUG	CASE QTY	LIST PRICE EACH*
F12-0034	3/4" (19mm) to 7/8" (22mm)	3.2 oz (91 g)	24	\$10.00
F12-0078	7/8" (22mm) to 1" (25mm)	4.8 oz (136 g)	24	\$10.00
F12-0118	1-1/8" (29mm) to 1-5/16" (33mm)	7.2 oz (204 g)	12	\$10.00
F12-0138	1-3/8" (35mm) to 1-9/16" (40mm)	12.8 oz (363 g)	12	\$15.00
F12-0158	1-5/8" (41mm) to 1-7/8" (48mm)	21.6 oz (612 g)	6	\$20.00

\*Quick-Tites sold in case quantities only. List prices are per fitting sold in case quantity. For less than case quantity pricing, contact factory.



# LED Lights for Canopy Hoods

## LED EDISON-BASE LIGHT

LED lights are energy-efficient and environmentally friendly, but standard LEDs do not perform well in high temperature environments. Flame Gard LED-40000 Series bulbs are UL listed and rated to 75°C (167°F).

- OPERATING TEMPERATURE -4°F TO 176°F (-20°C TO 80°C)
- 120 DEGREE BEAM ANGLE FLOODS THE WORKSPACE WITH LIGHT
- RATED FOR 50,000 HOUR LIFE - 50X STANDARD INCANDESCENT BULBS
- MERCURY-FREE
- EXCEEDS FEDERAL ENERGY ACT REQUIREMENT
- UNBREAKABLE POLYCARBONATE ENCLOSURE
- FITS ANY A19/E26/E27 FIXTURE (EXISTING GLOBE MUST BE RE-INSTALLED TO COMPLY WITH UL LISTING)
- 5 YEAR WARRANTY



PATENT PENDING

MODEL NO.	DESCRIPTION	WATTS	LUMENS	KELVINS	LIST PRICE
LED-40000N-B	Bulb only, standard packaging	12	960	4500 - 5500	\$80.00
LED-40000W-B	Bulb only, standard packaging	12	930	2800 - 3500	\$80.00
LED-40000N-P	Bulb only, retail packaging	12	960	4500 - 5500	\$80.00
LED-40000W-P	Bulb only, retail packaging	12	930	2800 - 3500	\$80.00
LED-40001N	Bulb with globe	12	960	4500 - 5500	\$95.00
LED-40001W	Bulb with globe	12	930	2800 - 3500	\$95.00



## LED CANOPY HOOD LIGHT FIXTURE

LED 40000 SERIES BULBS COMPLETE WITH FIXTURE AND GLOBE

MODEL NO.	DESCRIPTION	LIST PRICE
L55-LEDN-1004	12 Watt, 4500K to 5500K, 960 lumens, plastic coated glass globe	\$120.00
L55-LEDW-1004	12 Watt, 2800K to 3500K, 930 lumens, plastic coated glass globe	\$120.00
L55-LEDN-1024	12 Watt, 4500K to 5500K, 960 lumens, plastic coated glass globe, wire guard	\$125.00
L55-LEDW-1024	12 Watt, 2800K to 3500K, 930 lumens, plastic coated glass globe, wire guard	\$125.00
L55-LEDN-2004	12 Watt, 4500K to 5500K, 960 lumens, tempered glass globe	\$110.00
L55-LEDW-2004	12 Watt, 2800K to 3500K, 930 lumens, tempered glass globe	\$110.00
L55-LEDN-2024	12 Watt, 4500K to 5500K, 960 lumens, tempered glass globe, wire guard	\$120.00
L55-LEDW-2024	12 Watt, 2800K to 3500K, 930 lumens, tempered glass globe, wire guard	\$120.00



# E-Z Mount Incandescent Canopy Lighting Fixtures



- E-Z MOUNT FEATURE ALLOWS FOR QUICK INSTALLATION
- PERMANENTLY AFFIXED GASKETS CUT INSTALLATION TIME
- MEETS ALL REQUIREMENTS FOR NFPA 96 AND N.E.C. 410
- GREASEPROOF, WATERPROOF AND HEATPROOF CONSTRUCTION

## SPECIFICATIONS

<b>FIXTURE BODY:</b>	Die cast aluminum with brushed finish
<b>SOCKET:</b>	Porcelain body with copper shell
<b>WIRE LEADS:</b>	16 awg, 6" (152mm) long
<b>GROUND LEAD:</b>	6" (152mm) long green colored 18 awg wire
<b>WATTAGE:</b>	Accepts standard 100 watt A19 bulb (not furnished)
<b>VOLTAGE:</b>	Rated up to 120 volts
<b>GASKETS:</b>	Silicone
<b>OVERALL SIZE:</b>	5-1/2" (140mm) diameter and 8-3/4" (222mm) long with wire guard
<b>JUNCTION BOX:</b>	Not furnished. Fixture is designed to accept any standard 3-1/2" (89mm) or 4" (102mm) junction box

MODEL NO.	DESCRIPTION	LIST PRICE PER FIXTURE
L55-1004	Furnished with TUFF-SKIN* coating; thermal and shock resistant tempered glass globe	\$36.00
L55-1004-CSA	Furnished with TUFF-SKIN* coating; thermal and shock resistant tempered glass globe; CSA certified	\$38.00
L55-1004-HT	Furnished with TUFF-SKIN* coating; thermal and shock resistant tempered glass globe; rated to 392°F (200°C), 600V; wire leads 14AWG, 6" (152mm) long stripped end. Insulation: silicone rubber with treated glass bead sleeving	\$40.00
L55-1024	Furnished with TUFF-SKIN* coating; thermal and shock resistant tempered glass globe; includes wire guard	\$43.00
L55-1024-CSA	Furnished with TUFF-SKIN* coating; thermal and shock resistant tempered glass globe; CSA certified; includes wire guard	\$45.00
L55-1024-HT	Furnished with TUFF-SKIN* coating; thermal and shock resistant tempered glass globe; rated to 392°F (200°C), 600V; wire leads 14AWG, 6" (152mm) long stripped end. Insulation: silicone rubber with treated glass bead sleeving; includes wire guard	\$47.00
L55-2004	Furnished with thermal and shock resistant tempered glass globe	\$34.00
L55-2004-CSA	Furnished with thermal and shock resistant tempered glass globe; CSA certified	\$36.00
L55-2004-HT	Furnished with thermal and shock resistant tempered glass globe; rated to 392°F (200°C), 600V; wire leads 14AWG, 6" (152mm) long stripped end. Insulation: silicone rubber with treated glass bead sleeving	\$38.00
L55-2024	Furnished with thermal and shock resistant tempered glass globe; includes wire guard	\$40.00
L55-2024-CSA	Furnished with thermal and shock resistant tempered glass globe; CSA certified; includes wire guard	\$42.00
L55-2024-HT	Furnished with thermal and shock resistant tempered glass globe; rated to 392°F (200°C), 600V; wire leads 14AWG, 6" (152mm) long stripped end; Insulation: silicone rubber with treated glass bead sleeving; includes wire guard	\$44.00

\*"TUFF-SKIN" COATING ELIMINATES HOT SPOT BROWNING AND DISCOLORATION OF GLOBE • PREVENTS GLASS SHATTER FROM IMPACT, DROPPING, UNUSUAL STRESSES AND THERMAL SHOCK • SCRATCH RESISTANT • U.S.D.A. APPROVED • IMPROVES LIGHT SOURCE BY PROVIDING BETTER DIFFUSION



# Gasket Repair Kit, Tape, Grease Cups

## GASKET REPAIR KIT

- EXTEND THE SERVICE LIFE OR REPAIR OF UL FIRE RATED ACCESS DOORS
- GASKET MATERIAL MAXIMUM SERVICE TEMPERATURE IS RATED TO 2,300°F, 1260°C
- SILICONE ADHESIVE IS UL CLASSIFIED AND FACTORY MUTUAL APPROVED
  - UL APPROVED GASKET AND ADHESIVE MUST BE USED TOGETHER TO RETAIN THE UL LISTING ON YOUR FLAME GARD® ACCESS PANEL
- KIT INCLUDES ENOUGH MATERIAL TO REPAIR 7-16 ACCESS DOORS, DEPENDING ON DOOR SIZES

### REPAIR KIT INCLUDES

- 1 TUBE - SIL300 HIGH TEMPERATURE SILICONE ADHESIVE, 10.3 OZ (305ml) CARTRIDGE WITH REMOVABLE TIP
- 1 ROLL - HIGH TEMPERATURE SILICA CLOTH GASKET, .090 (2.3mm) THICK X 1.5" (38mm) WIDTH X 50' (15m) LENGTH

MODEL NO.	SHIPPING WT.	CASE QTY	LIST PRICE PER KIT*
750002	3.5 lbs (1.6 kg)	1	\$165.00



### SIL300 SILICONE FIRESTOP SEALANT IS:

	FILL, VOID OR CAVITY MATERIAL CLASSIFIED BY UNDERWRITERS LABORATORIES INC.® FOR USE IN THROUGH-PENETRATION FIRESTOP SYSTEMS. SEE UL FIRE RESISTANCE DIRECTORY UNDERWRITERS LABORATORIES® CLASSIFIED WALL PROTECTION MATERIAL. SEE PRODUCT CATEGORY IN UL FIRE RESISTANCE DIRECTORY CLASSIFIED FILL, VOID, OR CAVITY MATERIALS FOR USE IN THROUGH-PENETRATION FIRESTOP SYSTEMS. SEE UL DIRECTORY OF PRODUCTS CERTIFIED FOR CANADA AND UL FIRE RESISTANCE DIRECTORY	
--	---	--

## FOIL AND DUCT TAPE

- IDEAL FOR SEALING SEAMS AND JOINTS ON HVAC DUCTS



MODEL NO.	DESCRIPTION	SIZE	CASE QTY	LIST PRICE EACH
Q84-3200	Heavy duty duct tape	2" x 60 yds (51mm x 55m)	24	\$32.00
Q84-4250	Hi-strength aluminum foil tape	2-1/2" x 50 yds (64mm x 46m)	16	\$40.00

## REMOVABLE STAINLESS STEEL CANOPY HOOD GREASE CUPS

MODEL NO.	DIMENSIONS	DESCRIPTION	WEIGHT	LIST PRICE EACH
F15-4000-C	4" x 6-5/8" x 4" DEEP (102mm x 168mm x 102mm)	Keyhole mount cup	1 lb (.45 kg)	\$17.00
F15-0019	4-1/4" x 6-3/4" x 2-1/2" DEEP (108mm x 171mm x 64mm)	Side mount cup	.5 lb (.23 kg)	\$13.00
F15-2500-C	4" x 6-3/4" x 2-1/2" DEEP (102mm x 171mm x 64mm)	Keyhole mount cup - 10° mounting angle	.4 lb (.2 kg)	\$20.00



10° MOUNTING ANGLE





## HI-TEMP ACCESS DOORS

- HI-TEMP ACCESS DOOR IS SOLID, LEAK RESISTANT AND CONSISTS OF TWO LAYERS OF STAMPED, HOT DIPPED GALVANIZED STEEL AND ONE 16 GAUGE BLACK IRON BACKING PLATE
- HI-TEMPERATURE CERAMIC FIBER GASKET - RATED 2300°F (1260°C) MAX-MEETS NFPA 96 STANDARDS IS PERMANENTLY BONDED TO THE OUTSIDE PANEL OF THE ACCESS DOOR
- ZINC PLATED CONICAL SPRINGS ARE INSTALLED, BETWEEN THE INNER AND OUTER PLATES, TO FACILITATE OPENING
- ZINC COATED WING NUTS ARE EASILY TURNED BY HAND • NO MEASURING (SELF-ADHESIVE TEMPLATE PROVIDED)
  - 6" BREAK-AWAY STUDS PERMIT INSTALLATIONS WITH FIRE WRAP INSULATION. STUDS MAY BE BROKEN AT 2" (102mm) FOR STANDARD INSTALLATIONS.

MODEL NO.	DIMENSIONS	CASE QTY	SHIPPING WT.	LIST PRICE EACH*
ACC-10X6	10" x 6" (254mm x 152mm)	6	4 lbs (1.8 kg)	\$61.00
ACC-12X8	12" x 8" (305mm x 203mm)	6	5 lbs (2.3 kg)	\$75.00
ACC-18X14	18" x 14" (457mm x 356mm)	6	11 lbs (5 kg)	\$110.00

\*Access doors sold in case quantities only. List prices are per filter sold in case quantity. For less than case quantity pricing, contact factory.

## REPLACEMENT PARTS

### L55 SERIES LIGHTING FIXTURE REPLACEMENT PARTS

MODEL NO.	DESCRIPTION	LIST PRICE EACH
L50-X011	Globe, furnished with TUFF-SKIN coating; thermal and shock resistant tempered glass	\$21.00
L55-X022	Globe, furnished with thermal and shock resistant tempered glass	\$16.00
L10-X020	Wire guard	\$8.50
L55-Y001	Lamp housing assembly; includes porcelain socket and required silicone gasket	\$21.00
L55-Y001-CSA	Lamp housing assembly; includes porcelain socket and required silicone gasket; CSA certified	\$23.00
L55-Y001-HT	Lamp housing assembly; includes porcelain socket and required silicone gasket; rated to 392°F (200°C), 600V; wire leads 14AWG, 6" (152mm) long stripped end. Insulation: silicone rubber with treated glass bead sleeving	\$25.00
L55-X006	Screw	\$0.25
L50-X009	Adapter plate	\$2.75
L55-X003	Porcelain socket	\$4.00
L55-X003-HT	Porcelain socket; rated to 392°F (200°C), 600V; wire leads 14AWG, 6" (152mm) long stripped end. Insulation: silicone rubber with treated glass bead sleeving; includes wire guard	\$5.50
L50-Y001	Gasket set	\$3.50



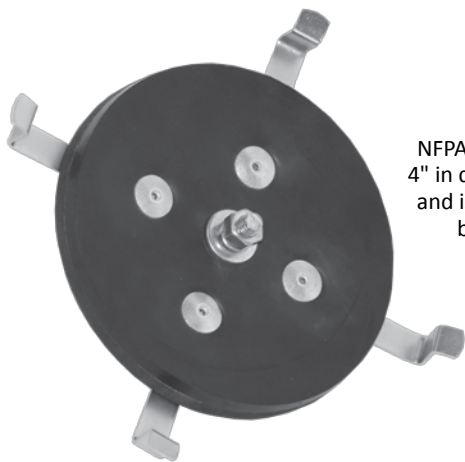


FAN HINGE KIT

Flame Gard hinge kits are the affordable solution to the fire code requirement for hinging commercial kitchen exhaust fans. Installation is simple and takes less than 30 minutes. They'll save the owner money for years to come by providing optimal accessibility, allowing the technician to clean the fan and ductwork quickly and safely.

- HEAVY DUTY, 10 GAUGE CORROSION RESISTANT STEEL • FITS MOST COMMERCIAL FAN BASES
- ALLOWS FAN TO BE LIFTED BACK TO A FULL 90° ANGLE
- SAFETY CHAINS SUPPORT FAN WHILE IN OPEN POSITION FOR SAFE ACCESS TO FAN AND DUCT

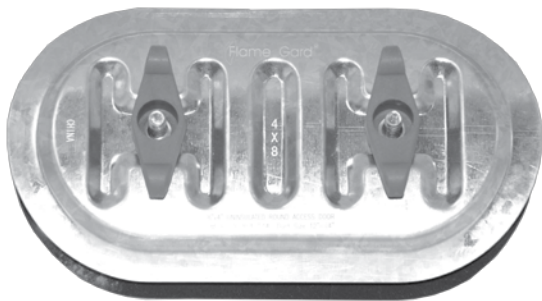
MODEL NO.	SHIPPING WT.	CASE QTY	LIST PRICE PER KIT
FG74-0506	5 lbs (2.3 kg)	1	\$65.00



FAN ACCESS PANEL

NFPA 96-8.1.5.3.1 requires all upblast fans to be supplied with an access opening of at least 4" in diameter for cleaning and inspection of the fan blades. The FG99-0005 is 5" in diameter, and is easy to install from the outside of the fan. Constructed of high strength HNBR rubber bonded to closed cell foam and zinc plated steel metal components, this fan access panel will hold up to the harshest weather, grease, and cleaning compounds.

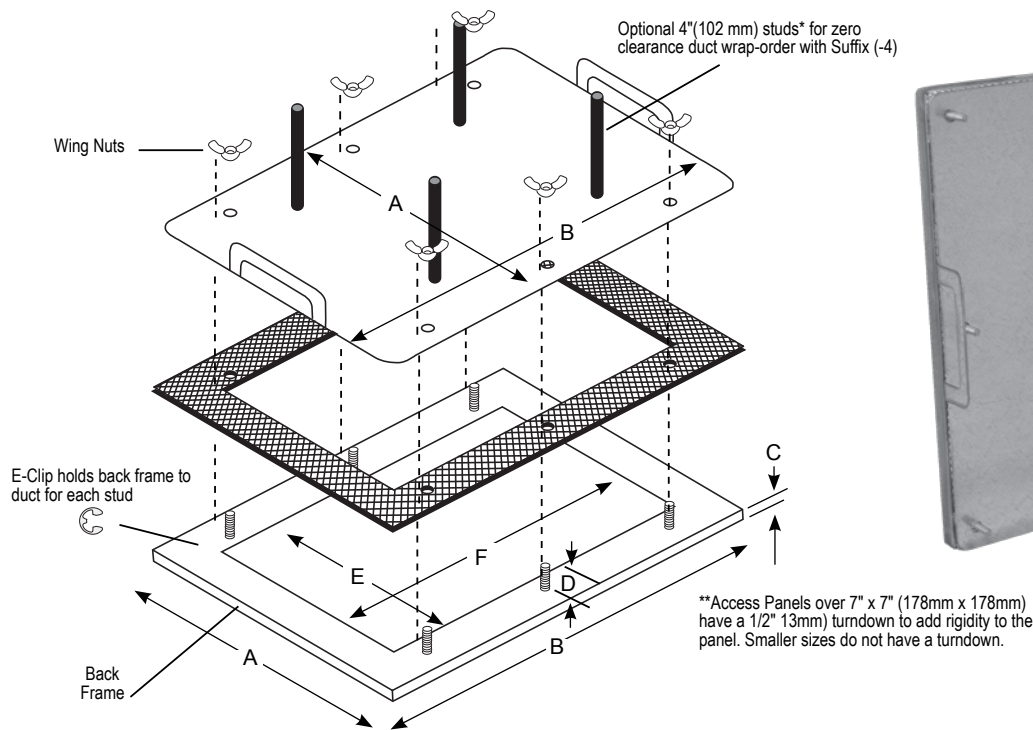
MODEL NO.	WEIGHT	CASE QTY	LIST PRICE EACH
FG99-0005	1 lb (.45 kg)	1	\$12.00



MAKE-UP AIR DUCT ACCESS PANEL

Uninsulated access panel provides easy access into make-up air ducts. Simple to install; self-adhesive template provided. Opens and closes without tools.

MODEL NO.	SIZE	CASE QTY	SHIPPING WT.	LIST PRICE EACH
760804-D14	4" x 8" (102mm x 203mm)	1	4 lbs (1.81 kg)	\$27.00

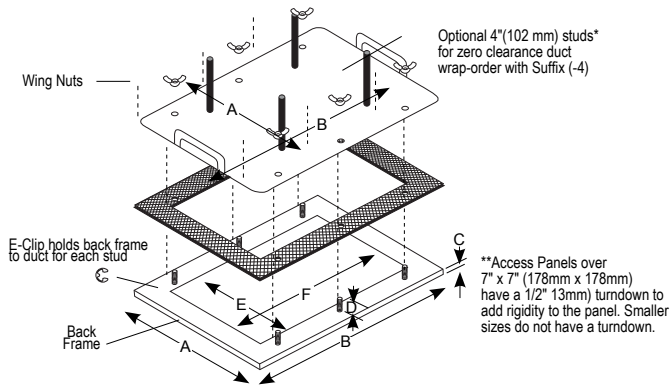


File No. MH19744

MODEL NO.	MAT'L	PANEL OUTSIDE DIMEN- SION		PANEL HEIGHT	STUD HEIGHT	HOLE SIZE		MTG STUDS	LIST PRICE
		A	B	C	D	E	F		
750710*	16 ga. Galv.	7" (178mm)	10" (254mm)	FLAT	1" (25mm)	5.5" (140mm)	8.5" (216mm)	6	\$79.00
750710-4					4" (102mm)				\$100.00
750710-SS	16 ga. 304 SS				1" (25mm)				\$221.00
750710-SS-4					4" (102mm)				\$275.00
750710-SS18	18 ga. 304 SS				1" (25mm)				\$168.00
750710-SS18-4					4" (102mm)				\$223.00
750715*	16 ga. Galv.	7" (178mm)	15" (381mm)	FLAT	1" (25mm)	5.5" (140mm)	13.5" (343mm)	6	\$95.00
750715-4					4" (102mm)				\$116.00
750715-SS	16 ga. 304 SS				1" (25mm)				\$223.00
750715-SS-4					4" (102mm)				\$278.00
750715-SS18	18 ga. 304 SS				1" (25mm)				\$170.00
750715-SS18-4					4" (102mm)				\$225.00
750723*	16 ga. Galv.	7" (178mm)	23" (584mm)	FLAT	1" (25mm)	5.5" (140mm)	21.5" (546mm)	10	\$121.00
750723-4					4" (102mm)				\$142.00
750723-SS	16 ga. 304 SS				1" (25mm)				\$313.00
750723-SS-4					4" (102mm)				\$367.00
750723-SS18	18 ga. 304 SS				1" (25mm)				\$236.00
750723-SS18-4					4" (102mm)				\$291.00
750606*	16 ga. Galv.	8" (203mm)	8" (203mm)	FLAT	1" (25mm)	6" (152mm)	6" (152mm)	4	\$84.00
750606-4					4" (102mm)				\$105.00
750606-SS	16 ga. 304 SS				1" (25mm)				\$201.00
750606-SS-4					4" (102mm)				\$255.00
750606-SS18	18 ga. 304 SS				1" (25mm)				\$153.00
750606-SS18-4					4" (102mm)				\$208.00

\*Stock item - all other configurations 3 week lead time ARO

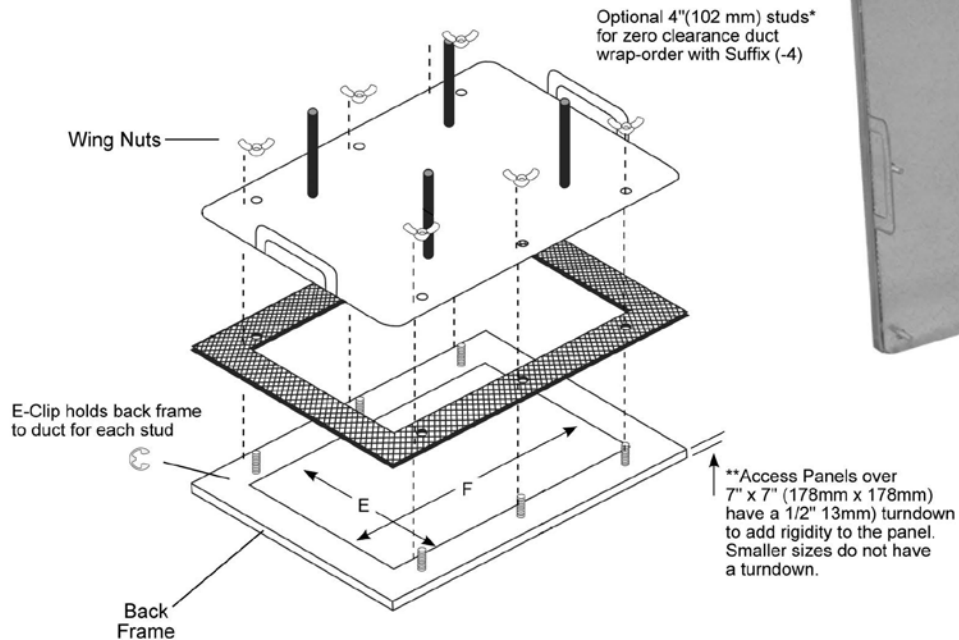
# Flat Access Doors – UL Fire Rated



MODEL NO.	MAT'L	PANEL OUTSIDE DIMENSION		PANEL HEIGHT	STUD HEIGHT	HOLE SIZE		MTG STUDS	LIST PRICE
		A	B	C	D	E	F		
750707*	16 ga. Galv.	10" (254mm)	10" (254mm)	.5" (13mm)	1" (25mm)	7" (178mm)	7" (178mm)	4	\$79.00
750707-4					4" (102mm)				\$100.00
750707-SS	16 ga. 304 SS				1" (25mm)				\$205.00
750707-SS-4					4" (102mm)				\$259.00
750707-SS18	18 ga. 304 SS				1" (25mm)				\$156.00
750707-SS18-4					4" (102mm)				\$211.00
750712*	16 ga. Galv.	10" (254mm)	15" (381mm)	.5" (13mm)	1" (25mm)	7" (178mm)	12" (305mm)	6	\$95.00
750712-4					4" (102mm)				\$116.00
750712-SS	16 ga. 304 SS				1" (25mm)				\$252.00
750712-SS-4					4" (102mm)				\$307.00
750712-SS18	18 ga. 304 SS				1" (25mm)				\$191.00
750712-SS18-4					4" (102mm)				\$246.00
750720*	16 ga. Galv.	10" (254mm)	23" (584mm)	.5" (13mm)	1" (25mm)	7" (178mm)	20" (508mm)	10	\$121.00
750720-4					4" (102mm)				\$142.00
750720-SS	16 ga. 304 SS				1" (25mm)				\$319.00
750720-SS-4					4" (102mm)				\$374.00
750720-SS18	18 ga. 304 SS				1" (25mm)				\$241.00
750720-SS18-4					4" (102mm)				\$296.00
751212*	16 ga. Galv.	15" (381mm)	15" (381mm)	.5" (13mm)	1" (25mm)	12" (305mm)	12" (305mm)	8	\$110.00
751212-4					4" (102mm)				\$131.00
751212-SS	16 ga. 304 SS				1" (25mm)				\$293.00
751212-SS-4					4" (102mm)				\$348.00
751212-SS18	18 ga. 304 SS				1" (25mm)				\$222.00
751212-SS18-4					4" (102mm)				\$276.00
751220*	16 ga. Galv.	15" (381mm)	23" (584mm)	.5" (13mm)	1" (25mm)	12" (305mm)	20" (508mm)	14	\$147.00
751220-4					4" (102mm)				\$168.00
751220-SS	16 ga. 304 SS				1" (25mm)				\$384.00
751220-SS-4					4" (102mm)				\$439.00
751220-SS18	18 ga. 304 SS				1" (25mm)				\$289.00
751220-SS18-4					4" (102mm)				\$344.00
751620*	16 ga. Galv.	19" (483mm)	23" (584mm)	.5" (13mm)	1" (25mm)	16" (406mm)	20" (508mm)	16	\$158.00
751620-4					4" (102mm)				\$179.00
751620-SS	16 ga. 304 SS				1" (25mm)				\$410.00
751620-SS-4					4" (102mm)				\$465.00
751620-SS18	18 ga. 304 SS				1" (25mm)				\$308.00
751620-SS18-4					4" (102mm)				\$363.00
752020*	16 ga. Galv.	23" (584mm)	23" (584mm)	.5" (13mm)	1" (25mm)	20" (508mm)	20" (508mm)	16	\$158.00
752020-4					4" (102mm)				\$179.00
752020-SS	16 ga. 304 SS				1" (25mm)				\$413.00
752020-SS-4					4" (102mm)				\$468.00
752020-SS18	18 ga. 304 SS				1" (25mm)				\$311.00
752020-SS18-4					4" (102mm)				\$402.00

\*Stock item - all other configurations 3 week lead time ARO

# ORDER FORM- FOR CUSTOM FLAT ACCESS DOOR PANELS



DIMENSIONS	SIZE	INCHES or MM
DIMENSION "E"		
DIMENSION "F"		

QUANTITY REQUIRED	DESCRIPTION
	16 GA. GALVANIZED STEEL WITH ZINC PLATED STEEL MOUNTING HARDWARE
	16 GA. 304 STAINLESS STEEL WITH 304 STAINLESS STEEL MOUNTING HARDWARE
	18 GA. 304 STAINLESS STEEL WITH 304 STAINLESS STEEL MOUNTING HARDWARE

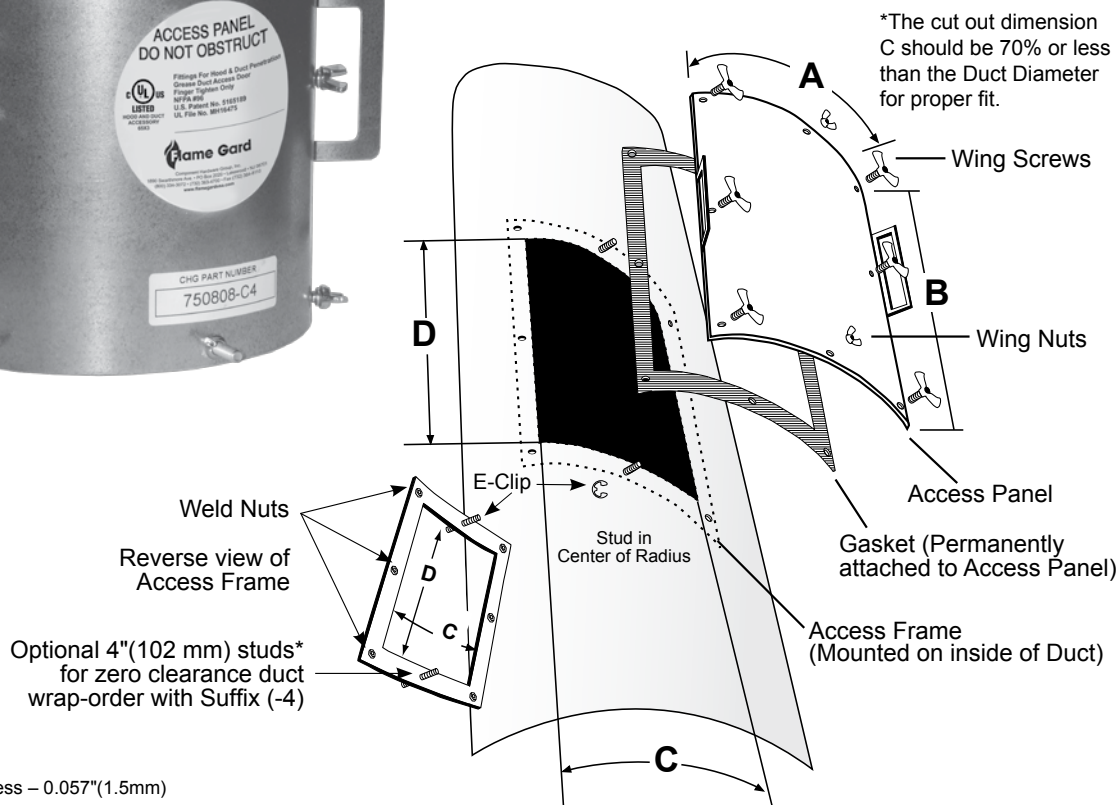
## Additional Notes

Date:	P.O. #	Account No:
Company Name:	Contact Name:	
Address:	City & State:	Zip:
Phone No:	E-mail:	



# Curved Access Doors – UL Fire Rated

- EASY TO CLEAN AND EASY TO INSTALL
- GASKET RATED TO 2300°F (1260°C) FOR FIRE TIGHT SEAL • GASKET IS HIGH-TEMP BONDED TO FRONT PANEL
  - AVAILABLE WITH EXTENDED STUDS TO ACCOMMODATE FIRE WRAP FOR CURVED DUCT APPLICATIONS
  - HEAVY-DUTY 16 GAUGE STEEL CONSTRUCTION • 16 GA AND 18 GA STAINLESS STEEL MODELS AVAILABLE
- NO MINIMUM ORDER REQUIREMENTS • POSITIVE BOLT PATTERN ENSURES FIRE-SAFE CLOSURE • BACK FRAME REINFORCES DUCT CUT-OUT



Optional 4" (102 mm) studs\*  
for zero clearance duct  
wrap-order with Suffix (-4)

## MATERIAL

### BACK PLATE:

Cold Rolled Steel, Thickness – 0.057" (1.5mm)

### FRONT PLATE:

Galvanized Steel, Thickness – 0.060" (1.5mm)

**NOTE: ALL CURVED ACCESS DOORS ARE 3 WEEK LEAD TIME.**

MODEL NO.	PANEL OUTSIDE DIMENSIONS		HOLE SIZE		LIST PRICE PER DOOR
	A	B	C	D	
750505-C	6.56" (167mm)	6.75" (171mm)	5.06" (129mm)	5.25" (133mm)	\$126.00
750511-C	6.50" (165mm)	12.75" (324mm)	5.00" (127mm)	11.25" (286mm)	\$126.00
750517-C	6.50" (165mm)	18.75" (476mm)	5.00" (127mm)	17.25" (438mm)	\$168.00
750808-C	9.50" (241mm)	9.75" (248mm)	8.00" (203mm)	8.25" (210mm)	\$126.00
750811-C	9.50" (241mm)	12.75" (324mm)	8.00" (203mm)	11.25" (286mm)	\$157.50
750817-C	9.50" (241mm)	18.75" (476mm)	8.00" (203mm)	17.25" (438mm)	\$157.50
750823-C	9.50" (241mm)	24.75" (629mm)	8.00" (203mm)	23.25" (591mm)	\$163.00
751117-C	12.50" (318mm)	18.75" (476mm)	11.00" (279mm)	17.25" (438mm)	\$168.00
751123-C	12.50" (318mm)	24.75" (629mm)	11.00" (279mm)	23.25" (591mm)	\$179.00
751717-C	18.50" (470mm)	18.75" (476mm)	17.00" (432mm)	17.25" (438mm)	\$194.00
751723-C	18.50" (470mm)	24.75" (629mm)	17.00" (432mm)	23.25" (591mm)	\$210.00

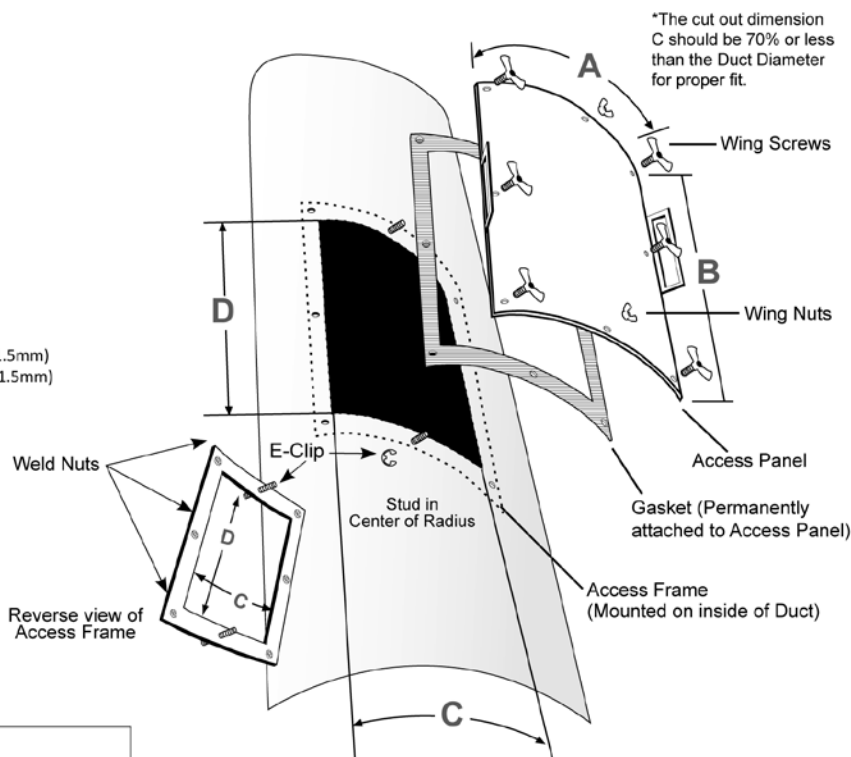
\*Add \$20 list per door for 4" studs.



# ORDER FORM- FOR CURVED ACCESS DOOR PANELS



**MATERIAL**  
**BACK PLATE:** Cold Rolled Steel, Thickness – 0.057" (1.5mm)  
**FRONT PLATE:** Galvanized Steel, Thickness – 0.060" (1.5mm)



**MODEL NO:**

**DUCT DIAMETER:**

**QTY:**

*Additional Notes:*

**Note:** All access panels are custom manufactured per order and are not returnable for credit.

ORDER BY MODEL NO.	PANEL OUTSIDE DIMENSIONS INCHES (MM)		HOLE SIZE INCHES (MM)	
	A	B	C*	D
750505-C	6.56" (167mm)	6.75" (171mm)	5.06" (129mm)	5.25" (133mm)
750511-C	6.50" (165mm)	12.75" (324mm)	5.00" (127mm)	11.25" (286mm)
750517-C	6.50" (165mm)	18.75" (476mm)	5.00" (127mm)	17.25" (438mm)
750808-C	9.50" (241mm)	9.75" (248mm)	8.00" (203mm)	8.25" (210mm)
750811-C	9.50" (241mm)	12.75" (324mm)	8.00" (203mm)	11.25" (286mm)
750817-C	9.50" (241mm)	18.75" (476mm)	8.00" (203mm)	17.25" (438mm)
750823-C	9.50" (241mm)	24.75" (629mm)	8.00" (203mm)	23.25" (591mm)
751117-C	12.50" (318mm)	18.75" (476mm)	11.00" (279mm)	17.25" (438mm)
751123-C	12.50" (318mm)	24.75" (629mm)	11.00" (279mm)	23.25" (591mm)
751717-C	18.50" (470mm)	18.75" (476mm)	17.00" (432mm)	17.25" (438mm)
751723-C	18.50" (470mm)	24.75" (629mm)	17.00" (432mm)	23.25" (591mm)

Date:	P.O. #	Account No:
Company Name:	Contact Name:	
Address:	City & State:	
Phone No:	E-mail:	Zip:



Component Hardware reserves the right to accept or reject return for credit requests for any Flame Gard product shipped as ordered. Any product accepted for return is subject to the prevailing restocking charge of 25% and freight charges in effect at time of return as authorized. Absolutely no product will be accepted without formal authorization by Component Hardware and the issuance of a Return Goods Authorization which must be on the outside of all original packaging. All return goods received by Component Hardware that are damaged will be returned with no credit issues. All freight for returns is the responsibility of the customer.

---

Whenever seller shall deliver or cause to be delivered to a common carrier any goods ordered by contractor, whether the particular common carrier shall have been designated in the shipping or routing instructions of contractor or not, seller shall not be responsible for any delays or damages in shipment, and the common carrier to which seller shall deliver goods shipped to contractor is hereby declared to be the agent of contractor. Therefore, it is the responsibility of contractor to file claim with the carrier for lost or stolen or damaged shipments.

## **TERMS**

- This pricelist supersedes all others.
- All prices are FOB Lakewood, NJ - USD.
- Prices are subject to change without notice.
- Open account terms are subject to approval. COD, cash in advance, and credit cards are accepted.

Unless indicated otherwise, products are sold in case quantities only. Prices in this price list reflect case quantities. For less than case quantity pricing contact factory.

All filters are shipped with standard handles. Holes for handles and brackets installed with filter purchase.

The use of the term “replaces”, “replaceable”, or “replacement” by Component Hardware regarding competitors’ parts may not mean that the parts are identical to the competitor’s product.

All photographs and illustrations are considered to be a representation of the actual item. In some cases there may be slight variations. This catalog, copy, part numbers and unique method of illustrating products is copyrighted by Component Hardware Group, Inc. All rights reserved. No portion of this catalog may be reproduced in any form or by any means in whole or in part, without the written consent of Component Hardware.

Component Hardware reserves the right to make any and all changes and to discontinue any of its products without notice. Not responsible for typographical errors.



FLAME GARD IS A REGISTERED TRADEMARK OF COMPONENT HARDWARE, REGISTERED IN THE U.S.